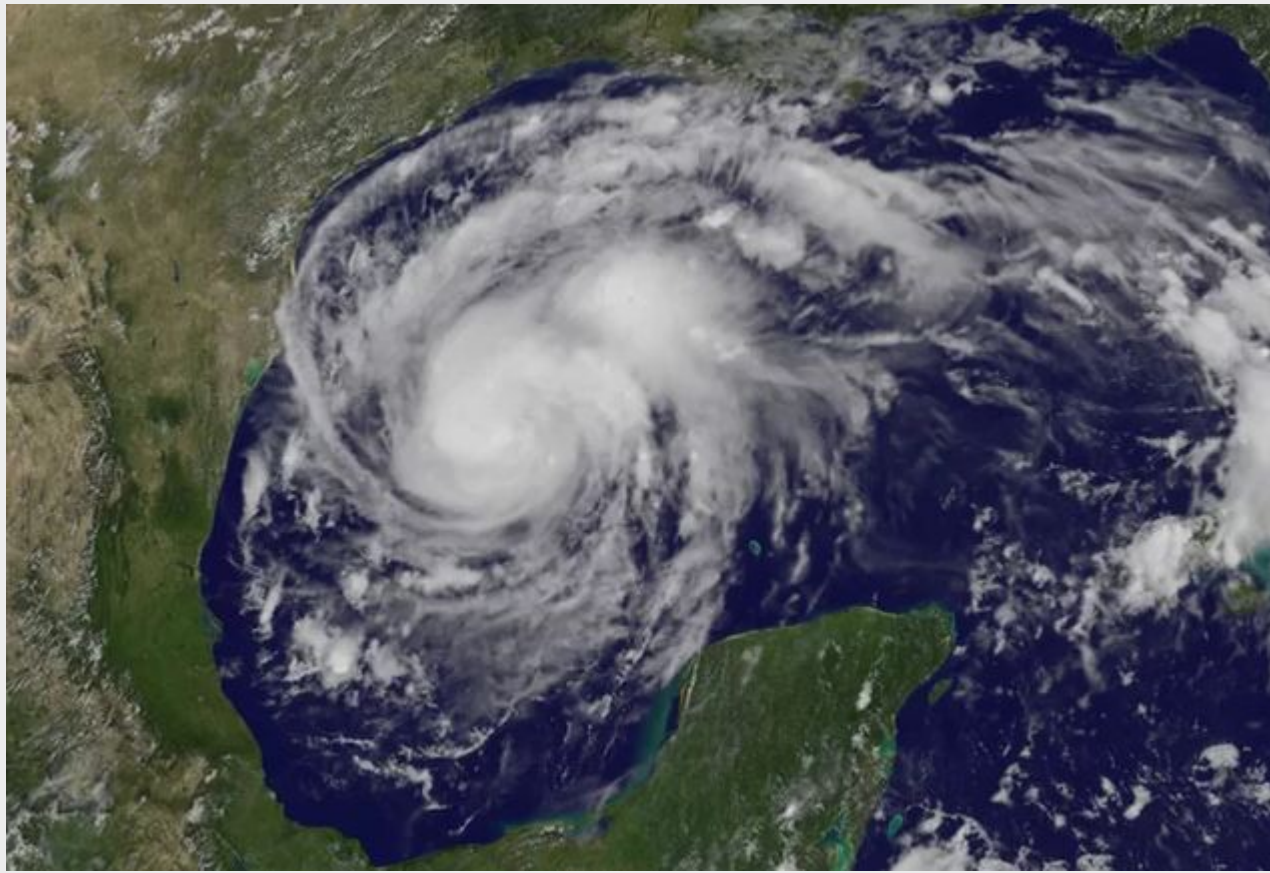




## WHEN HARVEY MET IRMA: A Pharmaceutical Logistics Company Delivers Vital Medications Between Two Historic Storms



September 7, 2017; Boca Raton, FL and Sugar Land, TX — When it rains, it pours. Twice.

Two historic hurricanes in two consecutive weeks tested the capabilities of a local pharmaceutical logistics company with facilities in the path of both storms.

WDSrx – Woodfield Distribution, LLC (“WDSrx”) based in Boca Raton, FL and near Houston in Sugar Land, TX delivers medications for manufacturers to hospitals, distribution centers and institutions around the country that dispense drugs to patients. Prompt order fulfillment is an important priority because patient health is at stake.

Because of the special nature of the products they handle, WDSrx employs comprehensive risk management procedures that anticipate potential scenarios that may disrupt normal operations. Disaster recovery plans return the business to normal operations after a natural disaster.

According to WDSrx President Adam Runsdorf, “We evaluate every contingency, from power outages and data hacking to traffic patterns and of course, weather forecasts.” That obsessive attention to detail helped

the company dodge two bullets from Hurricane Harvey and Hurricane Irma.

When Harvey crossed over Mexico August 23rd as a tropical storm, Woodfield consulted with clients about the potential impact in Texas. Although approved to withstand Category Four winds and equipped with supplemental power, certain clients decided to transfer inventory from the Sugar Land, TX facility. On August 24th, Harvey re-formed into a hurricane and smashed into the Texas coast August 25th. By then, trucks had already left Texas and were on their way to Florida for uninterrupted order fulfillment from the Boca Raton, FL warehouse facility. The WDSrx team endured the storm safely with no property damage. Normal business operations at WDSrx began returning within days of Harvey's landfall.

The following week, destruction from Harvey prompted clients to proactively address the threat from Irma as it moved towards the Florida coast. Additional staff and extended hours were put in place to increase efficiency. When the storm neared Puerto Rico on September 6th, inventory from specific clients was ready to be transported to Woodfield's Texas facility to assure continuous fulfillment.

"Moving medications within the supply chain is something most people don't think about until their prescription is delayed," says Runsdorf. "Pharmaceutical logistics companies specialize in minimizing risk to assure the correct order is received at the right time by the proper recipient. And that includes operating during multiple hurricanes."

To discuss how WDSrx protects clients with comprehensive risk management and disaster recovery procedures, please contact Larry Hotz (561) 998-3885 or [lhotz@wdsrx.com](mailto:lhotz@wdsrx.com)

Click [here for high resolution images](#) .



*Orders at WDSrx in Boca Raton, FL are packed into boxes in advance of approaching Hurricane Irma on September 7, 2017 – Copyright 2017 WDSrx*



*Exactly 224,000 units are prepared for transport from WDSrx in Boca Raton, FL to their Sugar Land, TX facility in advance of Hurricane Irma – Copyright 2017 WDSrx*



*Orders at pharmaceutical logistics company WDSrx in Boca Raton, FL are built into pallets for safe loading on trucks for transport to the company's Sugar Land, TX facility for fulfillment – Copyright 2017 WDSrx*



*Risk management procedures at WDSrx prompted proactive transfer of inventory from Boca Raton, FL to Sugar Land, TX to assure uninterrupted order fulfillment for clients – Copyright 2017 WDSrx*



*Additional personnel and longer hours were instituted to prepare orders in advance of approaching Hurricane Irma at WDSrx in Boca Raton, FL – Copyright 2017*

*WDSrx*